

## Smoke and CO Alarms

The best way to protect your pets in the event of fire is to ensure that you have working smoke alarms and carbon monoxide alarms installed on all levels of the home.

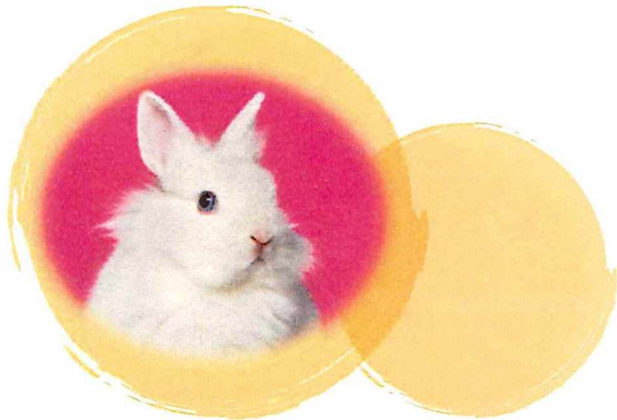
## Animal Behavior

Pets can be curious by nature, and because of that they may bump into, turn on, or knock over items like candles, or cooking equipment. It's important to keep pets away from stoves or off countertops when you are cooking.

Contact us for if you have questions

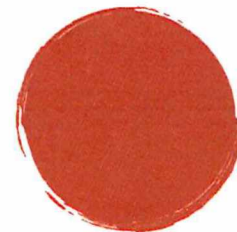
[fireforms@london.ca](mailto:fireforms@london.ca)

519-661-2489 (City) ext 4565



"Pets provide us with comfort, companionship and unconditional love. They are integral members of our lives and deserve to be protected in the event of a fire or other emergency".

J. Hind London Fire Department



# Pet Fire Safety





## Emergency Planning

Home fires are one of the most common disasters people can experience in their home, and the most preventable. That is why it is important to include your pets in your “Home Escape Plan”

If you live in an apartment or a detached dwelling practice your escape with your pets, train them to come when you call, and necessary items for them in your emergency preparedness kit.

Introduce new pets to the sounds of smoke alarms and carbon monoxide alarms so they don't panic. For current pets, take note of where they go and to when an alarm sounds so you can let the Fire Department know where they might be hiding. Never delay your escape or endanger yourself or family to rescue a family pet.

## Helpful Tips

- Keep pets away from candles, lamps and space heaters.
- Consider battery-operated, flameless candles.
- Do not use any electrical cords that have been chewed by a pet.
- Do not leave pets unattended when a candle is lit.

## Help Firefighter Help Your Pets

- If you have your dog in a crate, keep that crate near the entrance when possible.
- Keep collars on and leashes near the entrance where they can be easily seen.
- For smaller pets in cages, close the door to the room they are in the event of a fire.

